

# The Professional Choice for CNC PROGRAM EDITING

As a CNC programmer or machinist on the shop floor responsible for creating or editing CNC programs you need a professional tool that is fast and flexible.

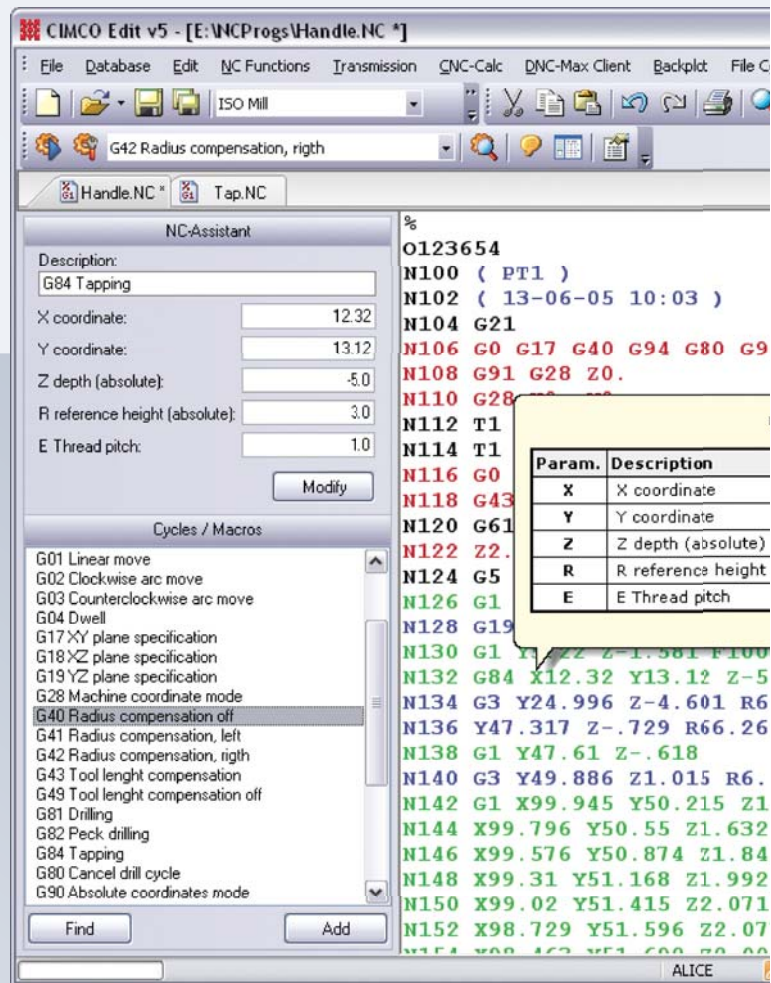
CIMCO Edit 5 is the latest version of the most popular CNC program editor on the market. With over 80,000 licenses distributed in the past few years, CIMCO Edit is the editor-of-choice for professional CNC programmers who demand a full-featured and reliable, cost-effective professional editing and communication tool.

## The Professional CNC Program Editor

CIMCO Edit 5 provides a comprehensive set of essential editing tools necessary for meeting the demands of modern CNC program editing.

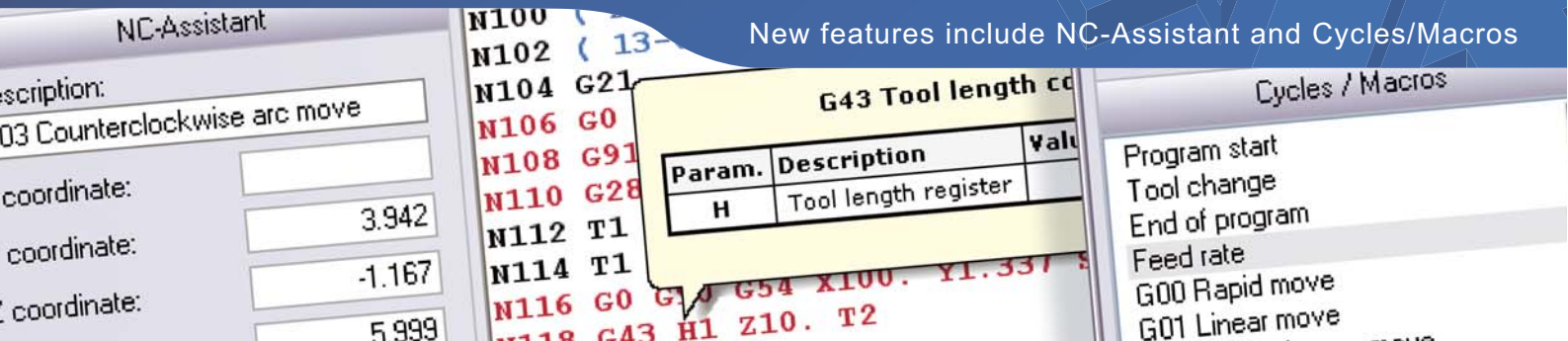
CIMCO Edit 5 has no program size limitations and includes CNC code specific options such as line numbering / renumbering, character handling and XYZ range finder. It also features math functions including basic math, rotate, mirror, tool compensation, and translate. CIMCO Edit 5 offers all the functions expected from an editor including drag-and-drop text editing. Best of all CIMCO Edit 5 is completely configurable and is easily adapted to any existing CNC program editing environment.

Every aspect of CIMCO Edit 5 is new, from the multi-pane tabbed layout to the dynamic toolbars and menus. CIMCO Edit 5 also includes new and powerful tools such as an enhanced file compare utility, a reengineered graphical back-plotter, and the new NC-Assistant programming tool.



Using Edit 5 is easy and intuitive - designed for usability and productivity

New features include NC-Assistant and Cycles/Macros

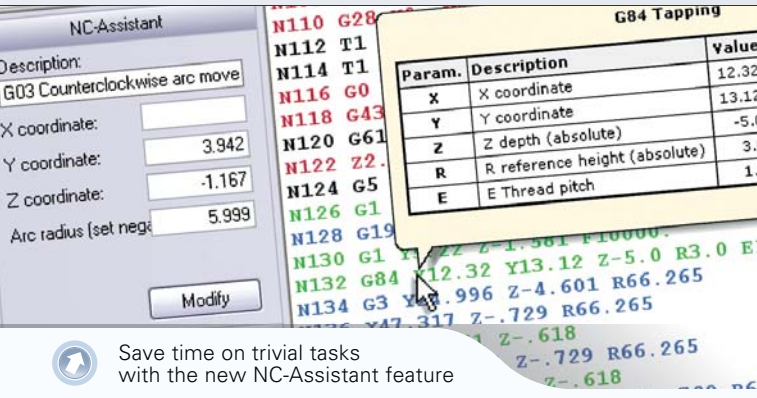


For more information visit us at [www.cimco-software.com](http://www.cimco-software.com)

## NC-Assistant

The NC-Assistant makes editing NC code faster and easier than ever. Point at any M or G code and the NC-Assistant will identify the code allowing you to modify values using an interactive interface linked to the CNC code. Input the desired values for any register and the NC-Assistant updates the CNC code automatically.

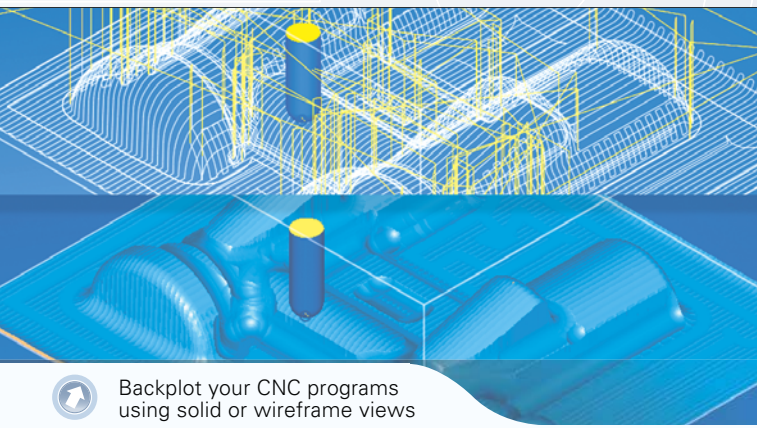
The NC-Assistant tool allows you to quickly insert and edit complex cycles and operations. CIMCO Edit 5 includes built-in cycles and macros for the most common operations such as program start, program stop and tool change. You can also record or create custom cycles and macros for the operations most common to your own specific setups and applications.



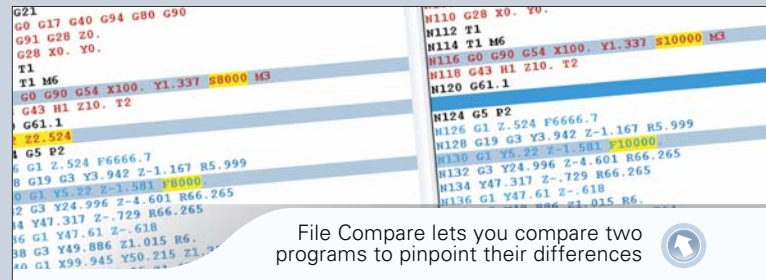
Save time on trivial tasks with the new NC-Assistant feature

## Graphical Backplotter

The 3D Mill / 2D Lathe backplotter handles your 3-axis Mill and 2-axis lathe CNC programs with step and continuous forward and reverse plotting. Edit the CNC program and the update is automatically reflected in the plot. Analyze the plot with dynamic zoom, pan, rotate and measuring functions. CIMCO Edit 5 supports solid visualization of NC code with toolholder collision check and gouge detection.



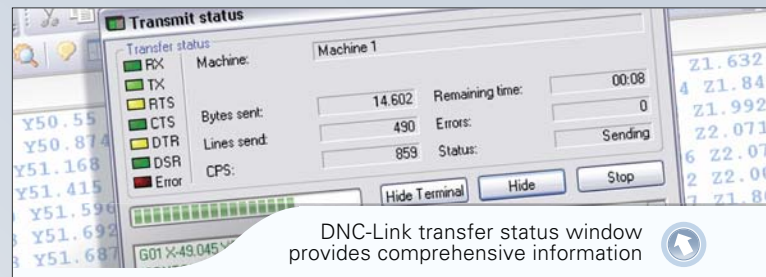
Backplot your CNC programs using solid or wireframe views



File Compare lets you compare two programs to pinpoint their differences

## Intelligent File Compare

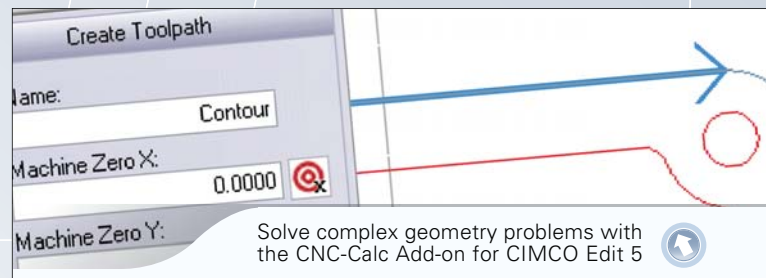
CIMCO Edit 5 features a fast and fully configurable side-by-side file compare, allowing the user to quickly identify CNC program changes. The file compare identifies changed and deleted / inserted lines, but ignores trivial format changes like block re-numbering and spacing. Differences are displayed one line at a time, all at once or printed side-by-side for offline review



DNC-Link transfer status window provides comprehensive information

## CNC Communications and DNC

CIMCO Edit 5 includes DNC capabilities for reliable RS-232 communications with a variety of CNC controls. With the DNC option you can send and receive CNC programs to multiple machines simultaneously from inside CIMCO Edit 5.



Solve complex geometry problems with the CNC-Calc Add-on for CIMCO Edit 5

## CNC-Calc Option

CNC-Calc is a fully featured 2D CAD solution that works inside CIMCO Edit 5. This add-on is a fast and effective solution for solving problems with complex 2D geometry. Users can draw or import (DXF) 2D geometry, specify cut depths, lead-in, lead-out, and other tool path variables and quickly generate CNC code in ISO and other conversational formats for contours and drilling.

## Reseller

### Europe

CIMCO Integration  
Lyngby, Copenhagen  
Denmark

Tel: +45 45 85 60 50  
Fax: +45 45 85 60 53

Website: [www.cimco-software.com](http://www.cimco-software.com)  
E-mail: [info@cimco-software.com](mailto:info@cimco-software.com)

### North America

CIMCO Integration  
Oakboro, North Carolina  
USA

Tel: +1 704 644 3587  
Fax: +1 704 645 7162